

**Job Name:** \_\_\_\_\_

**Location:** \_\_\_\_\_

**Purchaser:** \_\_\_\_\_

**Engineer:** \_\_\_\_\_

**Submitted To:** \_\_\_\_\_

**For:**  Reference  Approval  Construction

**Submitted By:** \_\_\_\_\_

**Date:** \_\_\_\_\_

**Unit Designation:** \_\_\_\_\_

**Cooling Performance:**

Nominal Capacity	42,700 Btu/h
Nominal Sensible Capacity	34,700 Btu/h
EWT Range	40-50°F (5-10°C)
Nominal Flow Rate	8.0 GPM
Nominal Pressure drop	5.4 Ft/Hd

**Heating Performance:**

Nominal Capacity	50,200 Btu/h
EWT Range	100-125°F (38-52°C)
Nominal Flow Rate	8.0 GPM
Nominal Pressure drop	5.4 Ft/Hd



- Notes:
- Cooling Capacity is based on 50°F Entering Water Temp and 80°F DB/67°F WB Entering Air Conditions.
  - Heating Capacity is based on 110°F Entering Water Temp and 70°F DB Entering Air Conditions.
  - Refer to detailed capacity tables for further information pertaining to the entire entering water temperature range and for flow rates and pressure drop.

**Airflow Rate:**

Nominal CFM	1600 CFM
Total External Static Pressure	Std: 0.3" WG / Max: 0.5" WG
Blower Speed setting	"A" FACTORY SETTING
Motor rating	3/4 HP

Airflow arrangement

- Up-flow,  Horz. Left,  Horz. Right (Possible)

**Electrical Data:**

Power supply	120V / 1PH / 60Hz
Min. Circuit Amps (MCA)	14 AMP
Max. overcurrent protection (MOP)	15 AMP

**Physical Data:**

Dimension (H x W x D)	48"x21-1/4"x28"
Weight	230 lbs
Insulation type / R-Rating	1/2" JM TUF-SKIN

Installation Clearances: U.L. Listed for installation with Zero inches Clearance to Combustible materials

**Connection type**

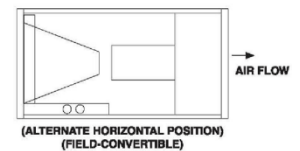
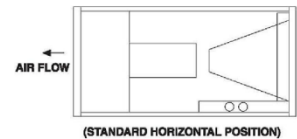
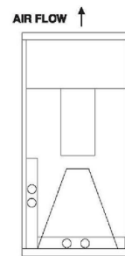
Inlet / Outlet Connections	1"(Nominal)
Connection Type	Sweat
Drain Connections	3/4"(M) NPT

**Feature:**

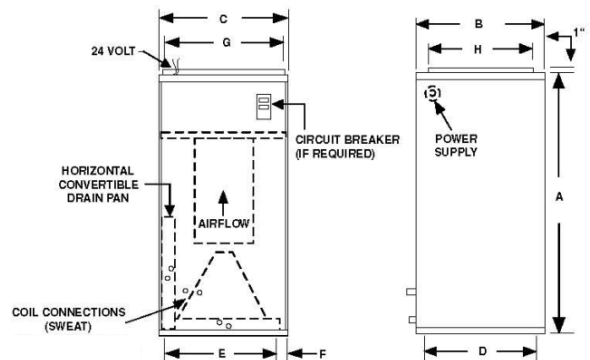
Air Filter (MERV 8 Throwaway)	20"x25"x1"
-------------------------------	------------

**Airflow arrangement**

**3-WAY AIRFLOW**



**Physical Dimensions**



A	B	C	D	E	F	G	H	FILTER SIZE
48	28	21-1/4	26-1/4	17-1/4	2	19-1/4	18	20x25x1